



New Intake Evening

25th May 2023

Redwell Primary School

Principal: Claire Head





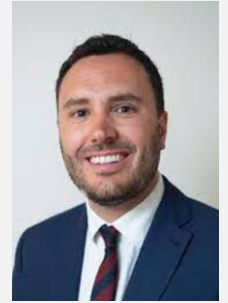
Welcome to RPS

Thank you for choosing us as your chosen school.





Nene Education Trust



Matt Coleman – Nene Education Trust- Director of School Improvement





Local Committee

- Amy Patterson – Chair Committee Member
- Graham Attwell – Vice Local Committee Member
- Nimish Lad – Parent Committee Member
- Zoe Casburn – School Local Committee Member





Senior Leadership Team

- Mrs Claire Head – Principal
- Mrs Dulcie Sharpe – Vice Principal
- Mrs Sara Nimmo – Assistant Principal
- Fiona Hoskins – SENCo – SEND and Pastoral Support

Senior Office Team:

- Mrs Sarah Gayton – Office Manager
- Mrs Jen Thompson - Administrator





Your most important team - EYFS staff

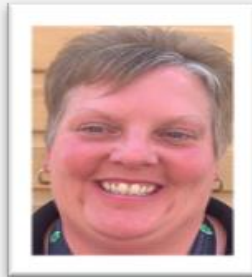
Brampton Class



**Miss
Harbison
(Year Lead)**



**Mrs
Mistry
(TA)**



**Mrs
Love
(TA)**

Grange Class

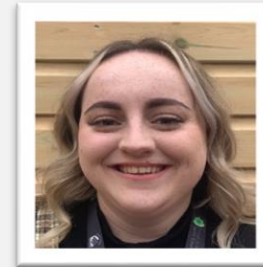


**Mr
Sargent
(Class
Teacher)**



**Mrs
Harvey
(TA)**

Ashby Class



**Miss
Haworth
(Class
Teacher)**



**Miss Ridden
(TA)**

**TA
Vacancy**





Starting School

- **IMPORTANT** - Sign & Return Packs should have been returned today
- Letter - collected from Mrs Gayton
 - Friday 23rd June: Stay & Play Session
 - Class name and teacher, morning or afternoon session
 - Wednesday 6th and Thursday 7th – 10 minute Parent meetings
 - All of the above is included in your parent pack you can collect tonight from Mrs Gayton
- **Monday 11th September – First day of school part-time**
- **Monday 18th September- First day of full-time 8:45am-3:15pm**





Starting School



- Wraparound Care –Pacesetters (bookings open 7th July)
- Arbor Parent APP – joining link emailed
- Universal Free School Meals –automatically eligible for Yrs R-2
- Fresh Start Hot Dinners –paid service from Yr 3
- Cool Milk –sign up for free until the age of 5, paid service after age 5
- Pupil Premium
- Tea & Tissues- 18th September





Pupil Premium Eligibility

Eligibility

You may be entitled to free school meals for your child(ren) if you receive one of the following benefits:

1. Income Support
2. Income Based Job Seekers Allowance
3. Child Tax Credit Only (with income up to £16,190) with no element of Working Tax Credit
4. National Asylum Seekers Support
5. Guarantee Element of the State Pension Credit
6. Employment and Support Allowance
7. Universal Credit (Income Related)

School receives - £1,455 per pupil for each Ever 6 FSM FTE pupil and each eligible NRPF FTE pupil, aged 4 and over in year groups reception to year 6.





Pupil Premium Eligibility

If you are eligible, you will receive an allowance of £260 per academic year, per child to spend on:

- £100 towards the cost to purchase uniform.
- £60 to cover the cost of trips for the year (residential not included).
- £100 to cover the cost of extra-curricular activities/clubs/music lessons.
- Free School Meals in Key Stage 2 (KS1 meals are already free to all children through Universal Free School Meals).
- Free milk after the age of 5 (free until they reach 5 yrs) **you must register them online at www.coolmilk.com**



Meet the Pastoral Team

FIONA HOSKINS



SENCO
MENTAL HEALTH FIRST AIDER

SARA CROOT



SCHOOL AND FAMILY SUPPORT WORKER
MENTAL HEALTH FIRST AIDER & ELSA

LAUREN MCDONALD



PASTORAL OFFICER

Our Pastoral Team has experience of supporting children with their emotional health and mental wellbeing across a range of difficulties such as, anxiety, anger management, bereavement, separation and divorce, safeguarding concerns, health problems and self-esteem.

We are here to help.

 pastoral@redwellprimary.co.uk  01933 676040





Friends of Redwell Primary School (FoRPS)

- Parent council & PTA
- Committee members & volunteers
- Fundraising events
- Recent purchases
- Benefits
- Swap Shop
- Facebook - [Friends of Redwell - Redwell Primary, Wellingborough](#)



EYFS Lead – Miss Harbison





Early Years Foundation Stage Curriculum

Prime Areas

- Communication and Language
- Physical Development
- Personal, Social and Emotional Development

Specific Areas

- Literacy
- Mathematics
- Understanding the World
- Expressive Arts and Design

[https://assets.publishing.service.gov.uk/government/uploads/system/uploads/attachment_data/file/1007446/6.7534 DfE Development Matters Report and illustrations web 2 .pdf](https://assets.publishing.service.gov.uk/government/uploads/system/uploads/attachment_data/file/1007446/6.7534_DfE_Development_Matters_Report_and_illustrations_web_2_.pdf)





The Early Years Profile TAPESTRY

How we gather evidence towards the EYFS profile- which consists of:

- Observations
- Home achievements/ parental observations
- Narratives observations
- Child voice
- Photos
- Independent work
- Examples of activities





Part- time

Monday 11th - Friday 15th September

- Timings 8:45am-11:45am **or** 1:15-3:15pm
- Labelled uniform, book bag, water bottle, coat and lunch box
- Named spare pair of trousers, t-shirt, socks and underwear
- Please keep toys and comforters at home
- Please bring in Magical Me box during this week.



Full-time

Monday 18th September

- Full-time timings 8:45am-3:15pm
- PE day will be **Tuesday**. Children will come into school wearing their PE kits. Ideally Velcro trainers. **No earrings**





How you can support your child at home during the summer

- Putting on and doing up their coat independently
- Using cutlery at the dinner table
- Recognising their name
- Recognising their belongings
- Shoe laces (ideally Velcro shoes)
- Reading bedtime stories
- Playing games





School Uniform

Winter

- V neck burgundy sweat shirt or cardigan with the Redwell Primary School logo
- White polo shirt (logo optional)
- Dark Grey (Charcoal) trousers/knee length skirt/culottes/skirt/knee length shorts
- **White** or Grey socks/ Grey tights
- Flat black plain shoes (no trainers)/ plain black boots

Summer (From Easter)

- Grey or white socks
- Red Gingham Dresses
- Flat black plain shoes (no trainers or sandals)

Redwell Primary School PE Uniform

- Plain white t-shirt (logo optional)
- Black shorts
- Black joggers
- Plain tracksuit top with logo
- Black Plimsolls – EYFS / KS1
- Trainers or Plimsolls – KS2
- **No earrings for PE (staff are unable to remove for the children)**





Values

- Throughout the year the children are rewarded with pebbles for displaying the Redwell Values, which are;

Ambition

Responsibility

Resilience

Respect

Compassion





Website & Facebook

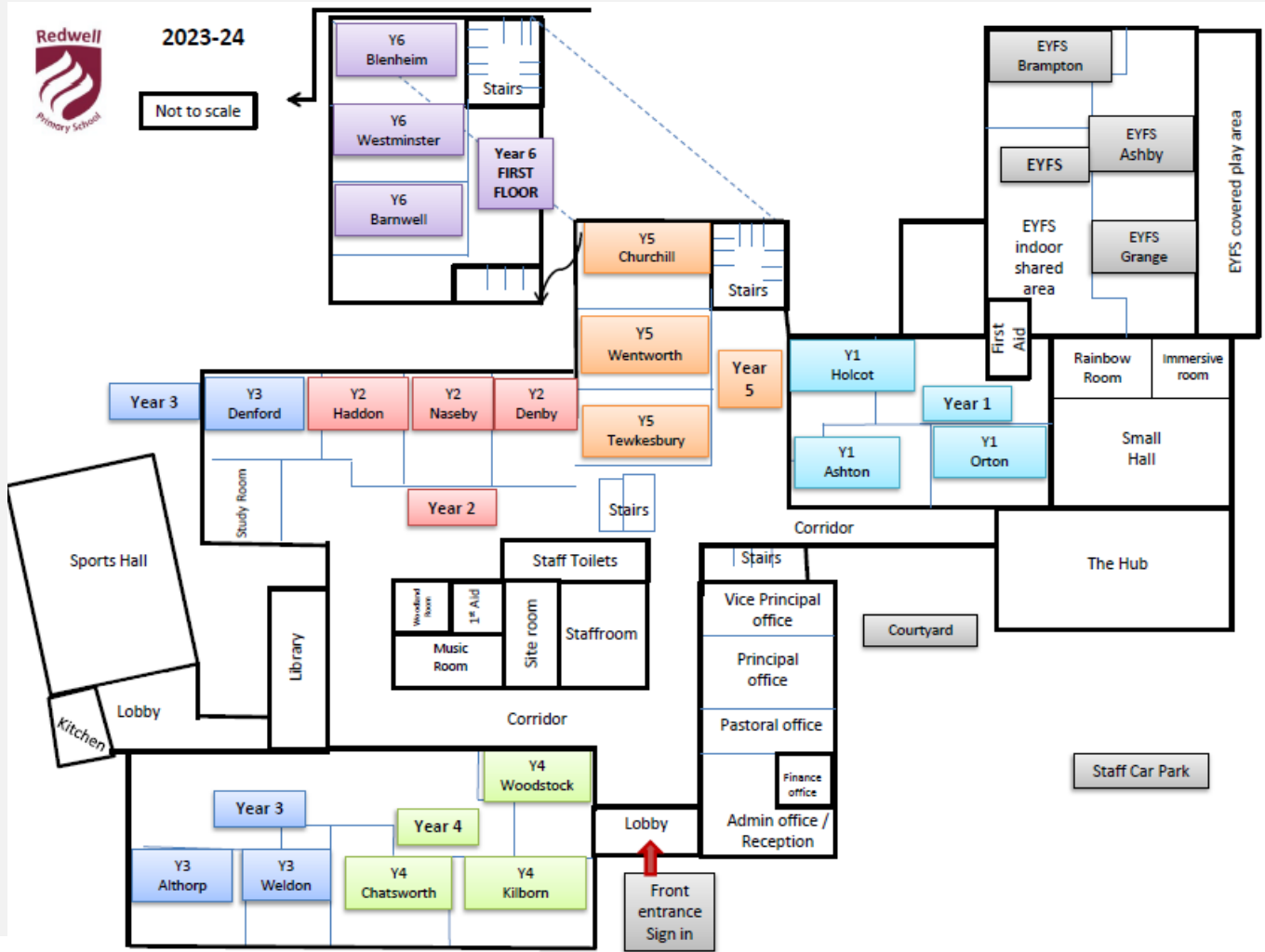
www.redwellprimaryschool.co.uk



FACEBOOK – Redwell Primary



Getting to know us ...





Small KS1 Hall

- Wraparound Care – Pacesetters leaflets
- Arbor Parent APP/ Communication /Forms
- Pupil Premium / Universal Free School Meals
- Hot Dinners – Fresh Start taster menu
- Friends of Redwell – Second hand uniform sale
- Refreshments





We are a Values-based School



Striving to achieve excellence in an outstanding, inclusive & nurturing community, through embedding values & effective partnerships.

12/06/2023